

Visiting Us: The Butler Gallery



A Social Narrative

The Butler Gallery is an art gallery in Kilkenny City that collects and displays different types of artwork including paintings, sculptures, drawings, photographs and videos.

This social narrative tells the story of visiting the Butler Gallery and will help us to get to know the building, what's inside and who we might meet on our visit.

To make our visit to the gallery as safe as possible all visitors must book free tickets in advance on our website.



BUTLER GALLERY

Where is The Butler Gallery?

We can find the Butler Gallery at John's Quay, Kilkenny which is very close to the busy city centre. We can also enter the Butler Gallery by Barrack Lane.

On Arrival

We will see two orange doors, the door on the left is the main entrance. We can enter the building using the steps or the ramp to the right.

If the doors are closed we can press the large button with a wheelchair symbol on the wall to the left and the doors will open slowly for us.



We must wear a face covering and sanitise our hands when entering the building. We can find hand sanitiser inside the door and throughout the building.



BUTLER GALLERY

Getting around the Gallery

Once inside the front door, we will meet a volunteer who can give us directions and answer any questions we have about our visit.

We will follow a one way route around the gallery. There are signs and white arrows on the floors to guide us around the building. We will also see signs telling us how to be safe.



On the ground floor we will find three different spaces, the reception, the café and the main gallery.



Reception

At the reception on the ground floor we can find gallery staff who can answer questions about our visit. We can pick up the free Butler Gallery Children's activity guide here. We can also buy books, postcards and some Irish crafts.



Muse Café

At the café, beside the reception we will find café staff who can take our order for drinks and food and bring them to us. The café may be busy and loud with people chatting.

Early in the morning 10am until 11am and late afternoon after 3pm are quieter times to visit.



BUTLER GALLERY

The Main Gallery

The main gallery beside the café is a large room with high ceilings. We can sometimes hear the air conditioning for the building making a low humming noise, like a fan in this area. The Butler Gallery uses the air conditioning to keep the temperature at a certain level to protect the artworks.



The artworks we see in this gallery change regularly. We can check the Butler Gallery website to see what's on.



BUTLER GALLERY

Gallery Staff



There are people in the gallery who can help us.
They are friendly and happy to meet us.

- Volunteers can help us find our way around the gallery and answer our questions.
They wear red lanyards around their necks.

- Gallery Staff can give us tours in the gallery and answer our questions.

- Café Staff can take our order for drinks and food and bring it to us in the café.

- Artist Facilitators and Assistants can help us when we are attending workshops in the gallery.



Gallery Facilities

We can find 3 bathrooms on the ground floor, one accessible bathroom and two other bathrooms. Upstairs we can find two bathrooms. All of the bathrooms at Butler Gallery are genderless, this means anyone can use them.



LEITHREAS UILE-INSICNE
ALL GENDER TOILET

Garden

We can get to the garden by leaving through the café or leaving through the exit door in the main gallery. Sometimes we can see people from the café sitting out here to the right. This is a quiet and calm space.



BUTLER GALLERY

Interpretation Area

Follow the white arrows on the floor to the left of the gallery entrance. We will pass a touch screen where we can explore the history of the Butler Gallery.

Here we can sit and watch a video of people speaking about the gallery and building with some low background music on a television.

To the left is a bench beside the stairs, this is a quiet area.



St Canice's Credit Union Learning Centre

We can find the Learning Centre on the ground floor to the left of the front door. Here the gallery staff and artist facilitators host art workshops, talks and other activities. If we want a quiet space simply ask staff at the reception for a key to the Learning Centre and they will let us in.



BUTLER GALLERY

Permanent Collection Galleries

Beside the interpretation area is a stairs and lift bringing us upstairs to the Butler Gallery permanent collection. A gallery collection is made up of different artworks the gallery bought or were given as gifts overtime.

Upstairs to the left is the Digital Gallery where we can watch videos projected on the wall. This room is dark to allow people to see the projection clearly and the video sound is played out loud. What the Butler Gallery shows in the Digital Gallery changes regularly.



The rooms upstairs are small and contain hard wooden floors. Windows let in natural daylight. We can hear the low hum of the air conditioning here. There are also two touch screens similar to downstairs in the first gallery space.

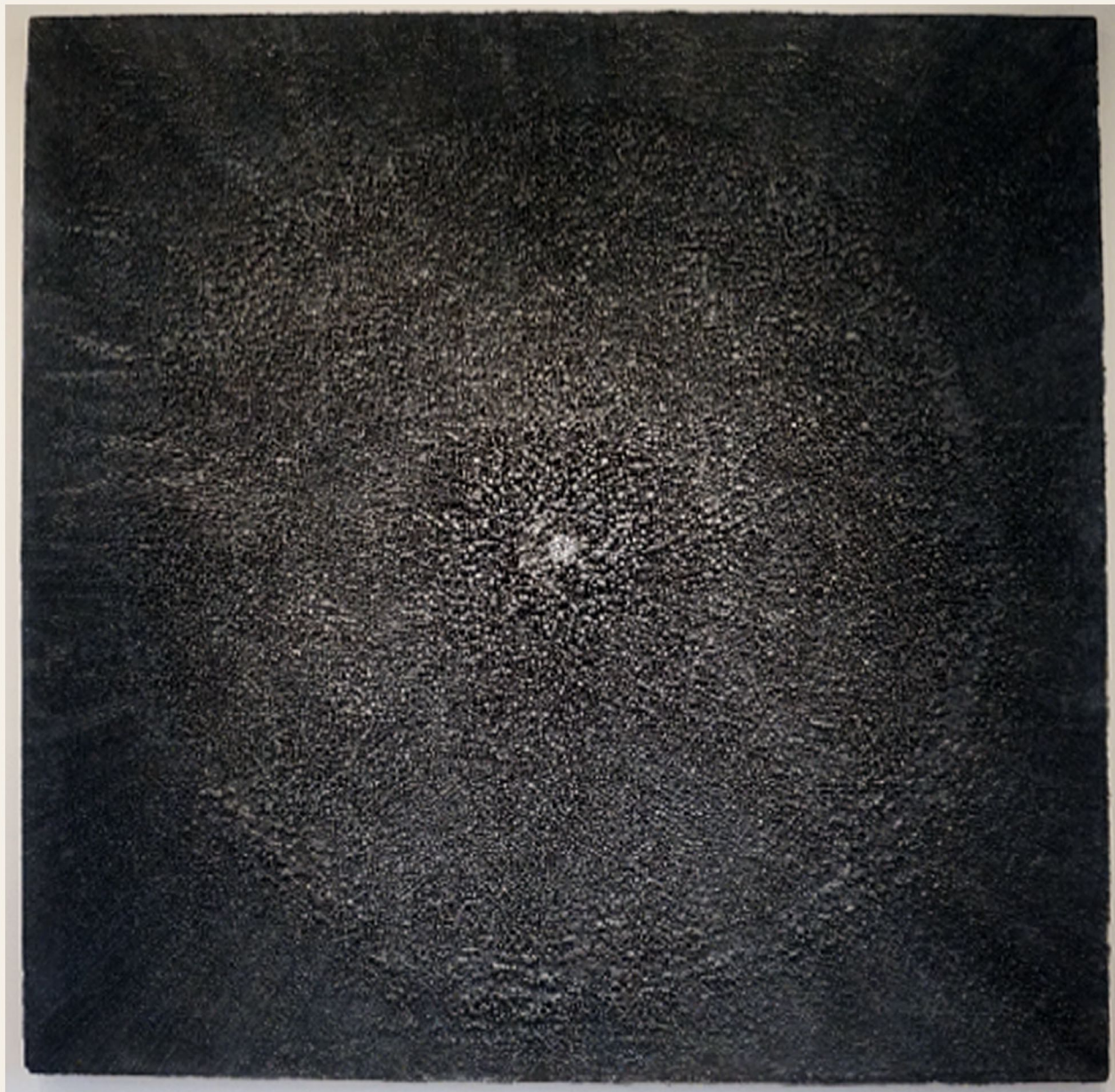
These rooms can be busy. We may also see a school tour or talk in these spaces. We might prefer to wait until there are less people in these rooms to look around in our own time.



BUTLER GALLERY

Permanent Collection Galleries

In these rooms we might see some of the following artworks.



'Old Saturn', 2019
Helen Comerford (b.1945)
Encaustic painting on
linen canvas with lead shot,
150 x 150cm,
Butler Gallery Collection.



BUTLER GALLERY

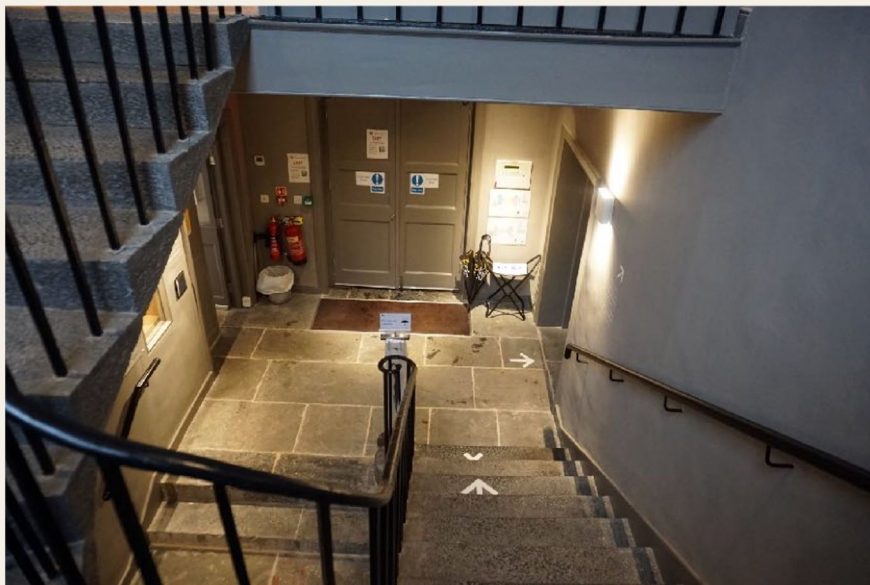
Permanent Collection Galleries



'6 Elements', 1926
Mainie Jellett (1897 - 1944))
Oil on canvas,
106 x 83.8cm,
On loan from private collection.



BUTLER GALLERY



As we walk around we will be led to the top of a spiral staircase which will bring us back downstairs.

If we would like to use the lift we can go back the way we came and get the lift back down to the ground floor.

Rules

At the Butler Gallery there are 4 rules for all visitors. When everyone follows these rules we can enjoy our visit, stay safe and protect the wonderful artworks.

1. We will not touch the artworks.
2. We will walk slowly and keep a safe distance from other visitors.
3. We cannot eat or drink in the galleries.
4. We will speak quietly.



If you hear the Fire Alarm

In the unlikely event of an emergency we will hear a loud fire alarm. It is important to stay calm and listen to gallery staff as they will guide us to the closest exit and safety point. Follow the lit green exit signs to safely leave the building.



Useful links

1. Book tickets: <https://www.butlergallery.ie/visit/tickets>
2. Way finding: <https://www.butlergallery.ie/visit/wayfinding>
3. Whats' on: <https://www.butlergallery.ie/whats-on>
4. Learn and Engage: <https://www.butlergallery.ie/learn-engage/>
5. Art & Artists: <https://www.butlergallery.ie/art-and-artists/butler-gallery-collection>

